

UNIVERSITY JOHN B. LAGSON FOUNDATION LIBRARY MAGAZINE

# Electronic Design®

THE AUTHORITY ON EMERGING TECHNOLOGIES FOR DESIGN SOLUTIONS

JULY/AUGUST 2019  
electronicdesign.com

# POWER PLAY

From semiconductors to EV charging, advances in power tech evolve to meet today's demands



#BXNPGMZ \*\*\*\*\*FIRM\*\*CAR-RT LOT\*\*C-031 P2  
+1100057640/0# EG SEG003  
MARITE VARGAS  
BEN SIMBORIO  
21131 MARBELLA AVE  
CARSON CA 90245-1339

75,000+ PRODUCTS  
FIND IT HERE!

 ANALOG DEVICES

AUTHORIZED DISTRIBUTOR

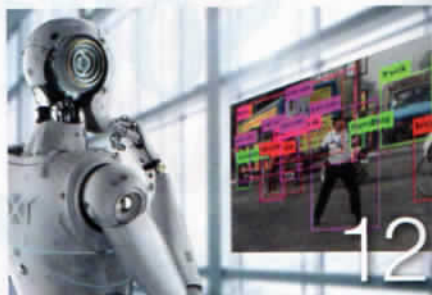


[digikey.com/adi](http://digikey.com/adi)

# IN THIS ISSUE

## FEATURES

- 12 Machine Learning: The Magic is How it Works**  
No overarching artificial intelligence looms on the horizon, but machine-learning tools can make applications do some magical things.
- 20 Probing Methods that Boost Power-Conversion Measurement Accuracy**  
Accurately evaluating and measuring power-conversion devices to find small performance increases means that highly accurate measurements are of utmost importance.
- 28 FPGA Highways Speed Machine Learning and Communication**  
Achronix's Speedster7t FPGAs utilize high-speed networks to provide faster communication between machine-learning blocks, storage, peripherals, and FPGA fabric.
- 30 Integrating Secure Non-Volatile Memory in Internet-of-Vehicles Systems**  
Automotive electronics, particularly in autonomous vehicles, is skyrocketing, and advanced secure memory storage in non-volatile memory will be crucial to next-gen computing architectures for these applications.
- 38 Power Semiconductors: Past, Present, and Future**  
Advances in manufacturing processes as well as material and packaging technologies, plus the emergence of new application areas, are creating a resurgence of sorts for wide-bandgap devices.
- 42 Thermal Modeling: How to Meet EV High-Power Charging Requirements**  
Powertrain electrification, automation, and new business models are shaping the next generation of mobility. These trends will profoundly impact the electrical power and electronic architectures of future vehicles.



## COLUMNS & DEPARTMENTS

- 4 ON ELECTRONICDESIGN.COM**
- 8 EDITORIAL**
- 10 NEWS & ANALYSIS**

- 47 CLASSIFIEDS**
- 47 AD INDEX**
- 48 LAB BENCH**

Flying Above the Shoulders of Giants

### EDITORIAL MISSION:

To provide the most current, accurate, and in-depth technical coverage of the key emerging technologies that engineers need to design tomorrow's products today.

**ELECTRONIC DESIGN** (ISSN 0013-4872) is published bi-monthly in Jan/Feb, Mar/Apr, May/June, July/Aug, Sept/Oct and Nov/Dec by Informa Media Inc., 9800 Metcalf Ave., Overland Park, KS 66212-2216. Paid rates for a one-year subscription are as follows: \$60 U.S., \$90 Canada, \$120 International. Periodicals postage paid at Kansas City, MO, and additional mailing offices. Editorial and advertising addresses: ELECTRONIC DESIGN, 605 Third Avenue, New York, NY 10158. Telephone (212) 204-4200. Printed in U.S.A. Title registered in U.S. Patent Office. Copyright © 2019 by Informa Media Inc. All rights reserved. The contents of this publication may not be reproduced in whole or in part without the consent of the copyright owner. For subscriber services or to order single copies, write to Electronic Design, PO Box 2100, Skokie, IL 60076. POSTMASTER: Send change of address to Electronic Design, PO Box 2100, Skokie, IL 60076. Canadian GST #R126431964.

Permission is granted to users registered with the Copyright Clearance Center Inc. (CCC) to photocopy any article, with the exception of those for which separate copyright ownership is indicated on the first page of the article, provided that a base fee of \$2 per copy of the article plus \$1.00 per page is paid directly to the CCC, 222 Rosewood Drive, Danvers, MA 01923 (Code No. 0013-4872/94 \$2.00 + \$1.00). Copying done for other than personal or internal reference use without the express permission of Informa Media, Inc. is prohibited. Requests for special permission or bulk orders should be addressed to the editor. To purchase copies on microfilm, please contact National Archive Publishing Company (NAPC) at 732-302-6500 or 800-420-NAPC (6272) x6578 for further information.

Subscribe to Newsletters

**Electronic Design**

www.electronicdesign.com/newsletters/signup

**Altech® POWER BLOCKS**  
with **PUSH-IN TECHNOLOGY**

- Time Saving **Push-In** Connection
- Easy wire insertion - no tool required
- Double Row Pins

Excellent Quality  
at Competitive Prices

www.altechcorp.com/PowerPCB

c RU US

**Altech® PCBs**  
with **PUSH-IN TECHNOLOGY****TYPES:**

- Fixed Push-In Terminal
- Power Terminals Push-In
- Tension Springs
- Pluggable Push-In

Excellent Quality  
at Competitive Prices

www.altechcorp.com/PushPlug

c RU US

**Electronic Design**SEPTEMBER/OCTOBER 2019  
ISSUE PREVIEW

Ad Close: 9/4/19 • Materials Due: 9/10/19

**TECHNOLOGY:**

Salary and Career Report

**INDUSTRY TRENDS**

Debugging

**PRODUCT TRENDS**

Storage

**ENGINEERING ESSENTIALS**

Processors

<http://electronicdesign.com>**INDEX**

Advertiser	Page	Advertiser	Page	Advertiser	Page
ABC Taiwan Electronics Corp.....	34	Dean Technology.....	IBC	Pasternack Enterprises.....	14-17
Absopulse Electronics.....	39	Digi-Key.....	FC, IFC	Pico Electronics Inc.....	18
Acces I/O Products.....	13	Fuses Unlimited.....	41	Radicom Research.....	6
Altech Corp.....	3	Hammond Mfg. Co. Inc.....	26	SNYN Electronics Co Limited.....	39
Analog Devices.....	25	Harwin.....	27	Stanford Research Systems.....	7
Avtech Electrosystems Ltd.....	19	Ironwood Electronics Inc.....	41	TDK-Lambda Americas Inc.....	37
Broadcom.....	23	KOA Speer Electronics.....	9	Wago Corporation.....	5
Burklin Elektronik.....	31	LPKF Laser & Electronics.....	35		
Coilcraft.....	1	Memory Protection Devices.....	11		
CWIEME.....	33	Mouser Electronics.....	32 a/b, BC		

For more information on products or services visit our website [www.electronicdesign.com](http://www.electronicdesign.com). The advertisers index is prepared as an extra service. *Electronic Design* does not assume any liability for omissions or errors.